



CLIENT FLOW

DATAWISE Dashboards

TABLE OF CONTENTS

1	DESCRIPTION OF CLIENT FLOW DASHBOARDS	3
1.1	Daily/Monthly Volumes – Consolidated	4
1.2	Daily/Monthly Volumes – Segregated	4
1.3	Monthly Volumes – Consolidated and Balance	5
1.4	Monthly Volume – Segregated	5
1.6	Accrued Balance	6
2	FILTERS	7
2.1	Metrics	7
2.2	Period	7
2.3	Investor Category	8
2.4	Macro Product	8
2.5	Instrument Type	8
2.6	Commodity	8
2.7	Tickers	9
3	REMARKS	9

1 PRODUCT DESCRIPTION WITHIN THE DATAWISE SERVICE

The DATAWISE product was created by B3 with the aim of helping its clients in strategic decisions consolidating various reliable and/or sensitive data in the form of interactive dashboards (DATAWISE Dashboard) and reports (DATAWISE Reports). It should be noted that as stated in the Commercial Policy, the DATAWISE service does not allow the distribution or redistribution of data.

Each of these modules can be contracted separately as well as their products (individual dashboards and reports), according to the client's intention. Through the interactive panels it's possible analyze the behavior of stocks (BOVESPA), derivatives and stock futures (BMF) and rental of stocks (BTB) with DATAWISE Dashboards. Already in DATAWISE Reports you can analyze trading and post-trade asset data, mainly from the OTC market through reports with raw data (Data Report) or worked reports (Market Report).

In this manual we will show the Client Flow dashboard layout, data and filters contained in the DATAWISE Dashboard module

2 DESCRIPTION OF CLIENT FLOW DASHBOARDS

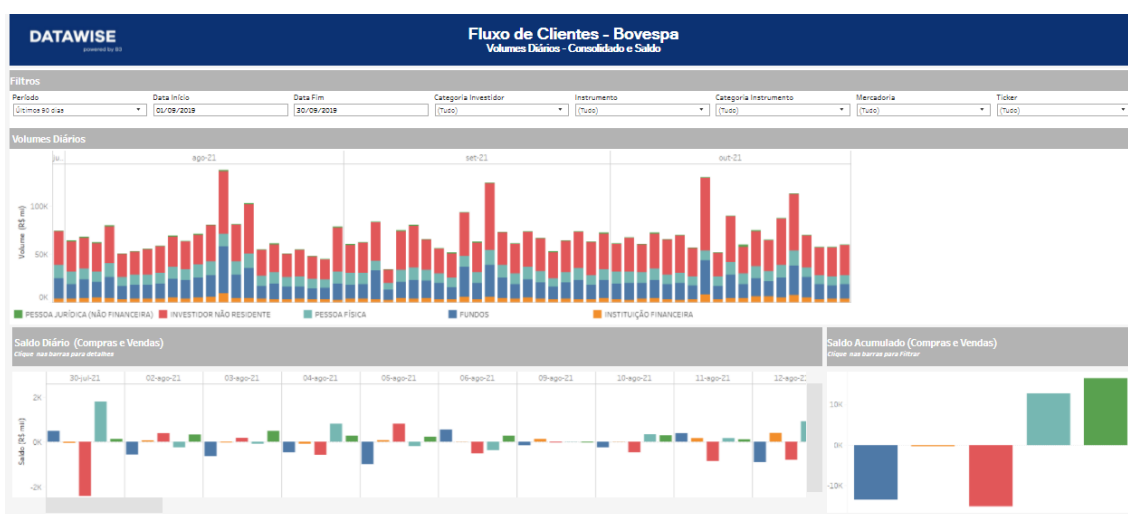
Client flow dashboards on DATAWISE will display the trading flow data contained in the Bovespa (Equities), BTB (Securities Lending) and BM&F (Futures and Derivatives) markets.

Five different dashboards are available for query, whose details will be covered in the following sections.

The trading flow allows users to understand how trading is progressing at ticker level with investor category, period and commodity filters. BM&F views allow analysis of the contract volume.

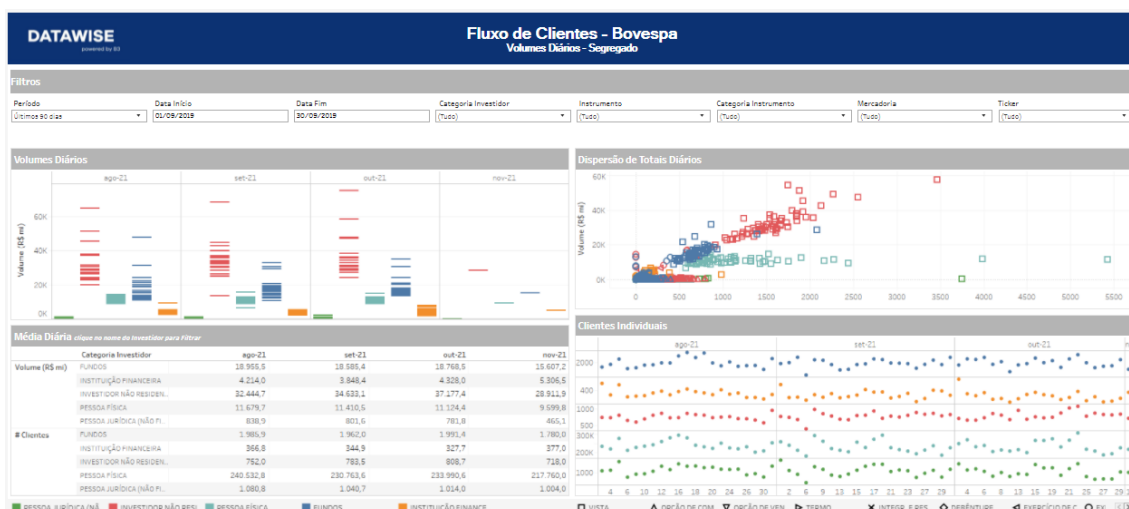
2.1 Daily/Monthly Volumes – Consolidated

This dashboard presents an overview enabling users to view the flow by investor type over time in a consolidated manner and on a daily or monthly basis. The daily volumes, daily balance and accrued balance will be displayed containing trading flow data in the Bovespa (Equities), BTB (Securities Lending) and BM&F (Futures and Derivatives) markets separately according to the selected dashboard.



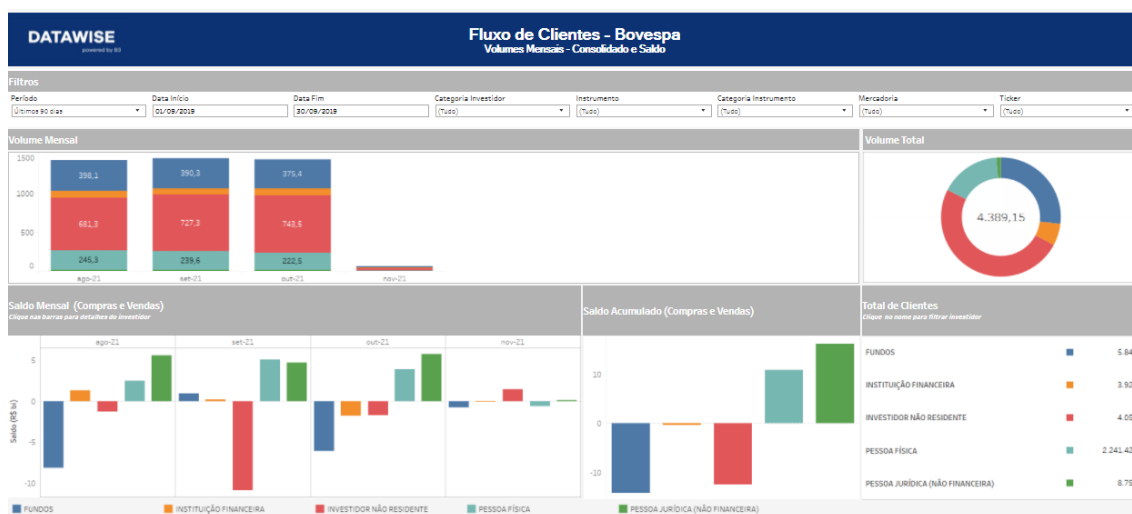
2.2 Daily/Monthly Volumes – Segregated

The Client Flow – Daily Volumes – Segregated dashboard shows, for each market, the Daily Volume, Daily Average, Dispersion (quantity/volume) and individual clients segregated by investor type.



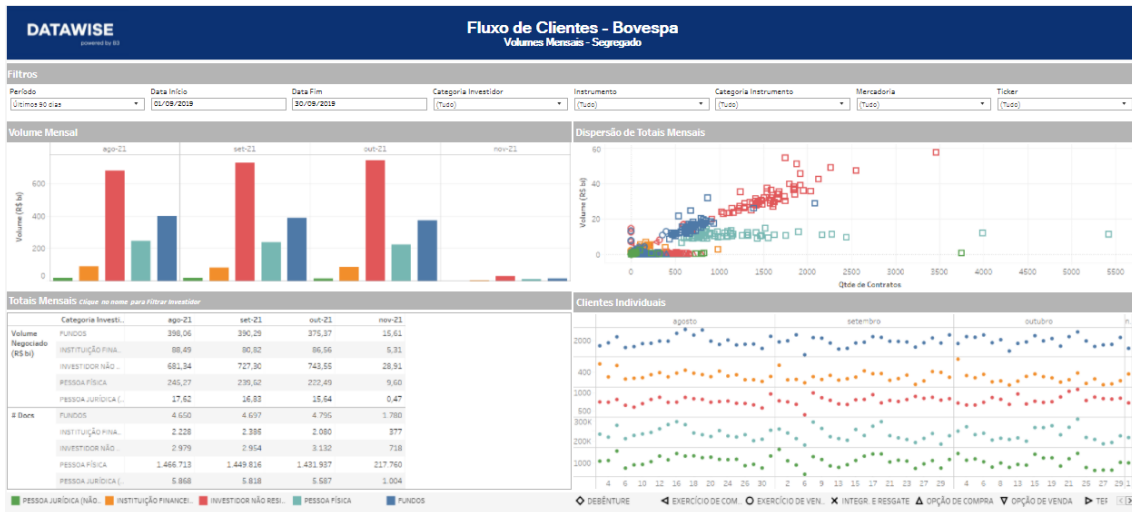
2.3 Monthly Volumes – Consolidated and Balance

This dashboard shows, for each market, the monthly volume, the accrued monthly balance, and total clients. All segregated by investor type.



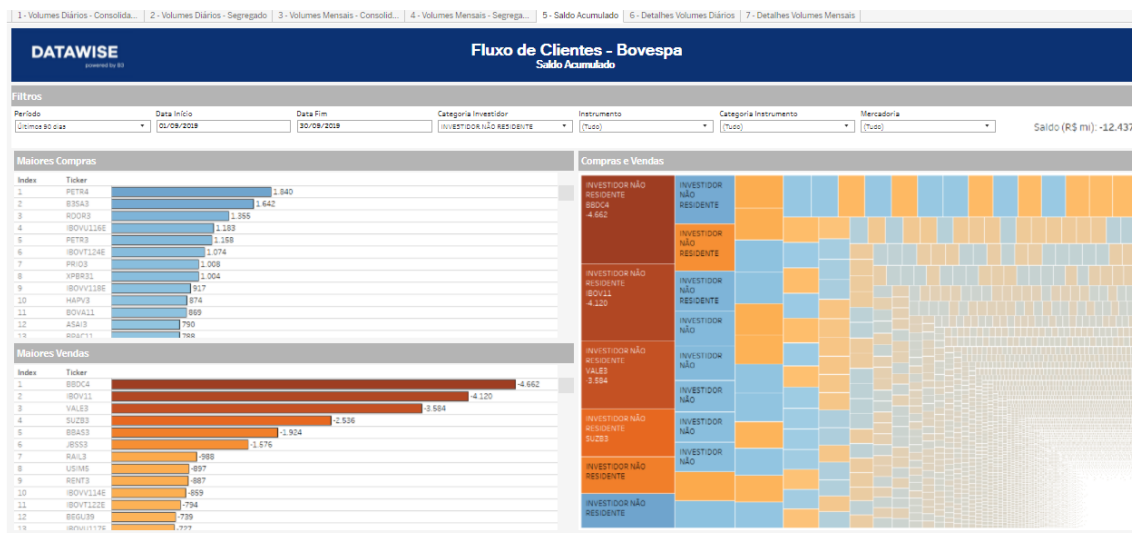
2.4 Monthly Volume – Segregated

This dashboard shows, for all markets, a view of the entire monthly volume over time, the Monthly Totals and the Monthly Total Dispersion (volume per quantity), all segregated by investor type.



2.6 Accrued Balance

The accrued balance shows, for each market, the largest on each side. For example, the BTB dashboard displays a rank of the largest borrowers/lenders. The BM&F and Bovespa dashboard displays the rank of the largest buy/sell trades. Finally, they all display a compilation of buy and sell trades broken down by color.



3 FILTERS

3.1 Metrics

Métricas

Metrics – Financial Volume and Stock Quantity are metrics available for viewing in the dashboard.

For Derivatives and Futures (former BM&F segment) – Use the quantity of contracts for a more assertive analysis.

3.2 Period

Período

Period – Date Selection: Allows users to choose start date and end date. Last 90 days: comprises the last 90 calendar days (changing the Start Date or End Date here does not lead to any changes).

Data Início	Data Fim
<input type="text" value="7/1/2019"/>	<input type="text" value="7/31/2019"/>

Start Date and End Date – When choosing the Date Selection option in the period, users may choose the start date and end date of the assessment.

3.3 Investor Category

Categoria Investidor

Investor Category – Breakdown of investor types available within the segments and their respective volumetry. Segregation between Individual Investors, Non-Resident Investors, Funds, Financial Institutions and Corporate Investors.

3.4 Macro Product

Macro Produto

Macro Product – Breakdown by Product. For Bovespa (Instrument Category): FII, Stocks, BDR, ETF, Options, Forward. For BM&F: U.S. Dollar, Indices, Stock Futures, Inflation Rate, Currencies, Commodities, etc.

3.5 Instrument Type

Tipo Instrumento

Instrument Type – Some instrument categories allow users to choose from more specific selections on dashboards, such as Stocks, Options, Exercises, Forward. BM&F will have Futures and Options selections in the future.

3.6 Commodity

Mercadoria

Commodity – Allows users to choose a specific commodity. Usually the commodity is the first 4 letters that make up the instrument, including Cash Equities, Options and Forwards.

3.7 Tickers

Tickers

Ticker – Allows users to choose the stock ticker to be assessed. All assets traded on analysis date will be available. Only one asset at a time may be chosen or view the entire market (by removing the filter).

4 REMARKS

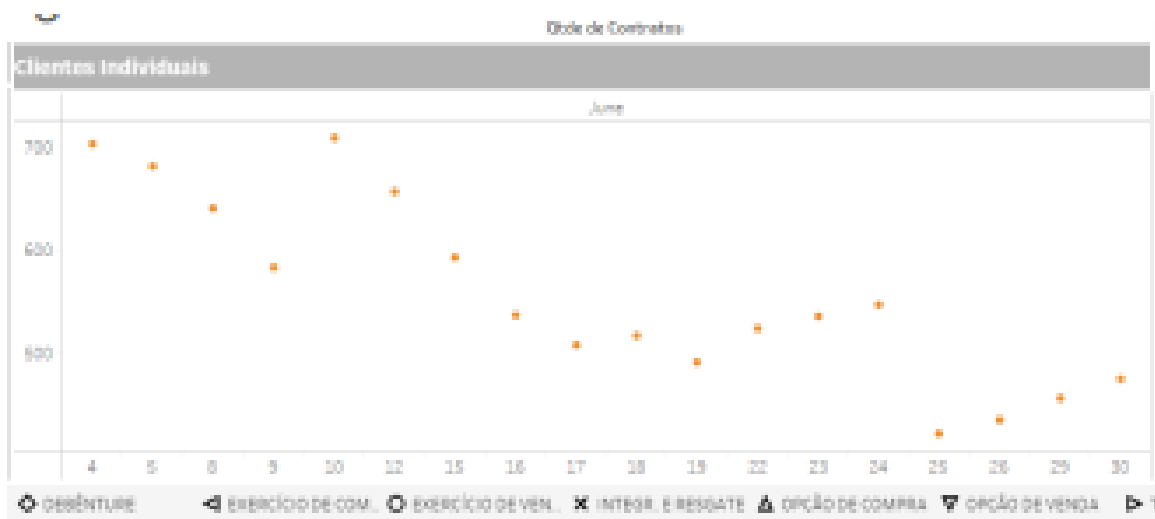
BTB View – In the BTB view, the buy and sell views are changed to borrower and lender. Borrower refers to the buy view, or positive view; lender, in the opposite leg, refers to the negative view (sell).

Segregated Monthly Volume – A blank field will be available allowing users to select a specific month for assessment. To enable the data in this field, click on data in the field beside the Monthly Totals data (click on name for Investor Filter). When selecting a month within the End Clients category, the blank field will already consider clients per day in that specific month. To assess an entire period already filtered, just click on the investor category line.

Totais Mensais (clique no nome para filtrar investidor)

	Categoria Investi...	Jun-20	Jul-20	Aug-20	Sep-20
Volume Negociado (R\$ b)	FUNDOS	200.13	206.05	247.50	25.93
	INSTITUÇÃO FINA...	62.30	66.67	66.28	4.78
	INVESTIDOR NÃO...	555.78	585.46	599.99	51.89
	PESSOA FÍSICA	277.23	351.23	287.24	25.11
	PESSOA JURÍDICA (...)	8.61	21.40	18.42	0.95
Clientes Físicos	FUNDOS	3.625	3.776	3.800	1.960
	INSTITUÇÃO FINA...	2.425	3.335	2.817	859
	INVESTIDOR NÃO...	2.890	2.910	2.879	1.823
	PESSOA FÍSICA	1.252.265	1.459.546	1.290.223	444.282
	PESSOA JURÍDICA (...)	3.229	4.355	4.029	1.421

INSTITUÇÃO FINANCEIRA



5 SERVICE TEAMS

Take a major step and optimize your decision making. Explore our products. If you have any query, talk to our team.

Any query? Talk to us

DATAWISE Sale: produtosdedados@b3.com.br

Contracting: contratacao@b3.com.br

Technical Support: dataservices@b3.com.br