



GEOLOCATION

DATAWISE Dashboards

TABLE OF CONTENTS

1	PRODUCT DESCRIPTION WITHIN THE DATAWISE SERVICE.....	4
2	DASHBOARD DESCRIPTION	4
2.1	Clustered Covered Cities	5
2.2	Clustered Covered States	6
2.3	State Clients Profile	7
2.4	State Profile	8
2.5	Perfil por Estado	9
3	FILTERS.....	10
3.1	Period	10
3.2	Federative Unit	10
4	SPECIFIC FILTERS FOR EACH PANEL.....	10
4.1	Clustered Covered Cities	11
4.2	Clustered Covered States	11
5	METRICS.....	12
5.1	Volume (Median) – Panel 1 and 2	12
5.2	Clusters – Panel 1 and 2	13
5.3	Income x Assets – Panel 2	13
5.4	Clients per Day– Panel 3 and 4	14

6 FINAL CONSIDERATIONS.....	14
7 SERVICE TEAMS	15

1 PRODUCT DESCRIPTION WITHIN THE DATAWISE SERVICE

The DATAWISE product was created by B3 with the aim of helping its clients in strategic decisions consolidating various reliable and/or sensitive data in the form of interactive dashboards (DATAWISE Dashboard) and reports (DATAWISE Reports). It should be noted that as stated in the Commercial Policy, the DATAWISE service does not allow the distribution or redistribution of data.

Each of these modules can be contracted separately as well as their products (individual dashboards and reports), according to the client's intention. Through the interactive panels it's possible analyze the behavior of stocks (BOVESPA), derivatives and stock futures (BMF) and rental of stocks (BTB) with DATAWISE Dashboards. Already in DATAWISE Reports you can analyze trading and post-trade asset data, mainly from the OTC market through reports with raw data (Data Report) or worked reports (Market Report).

In this manual we will show the Geolocation dashboard layout, data and filters contained in the DATAWISE Dashboard module.

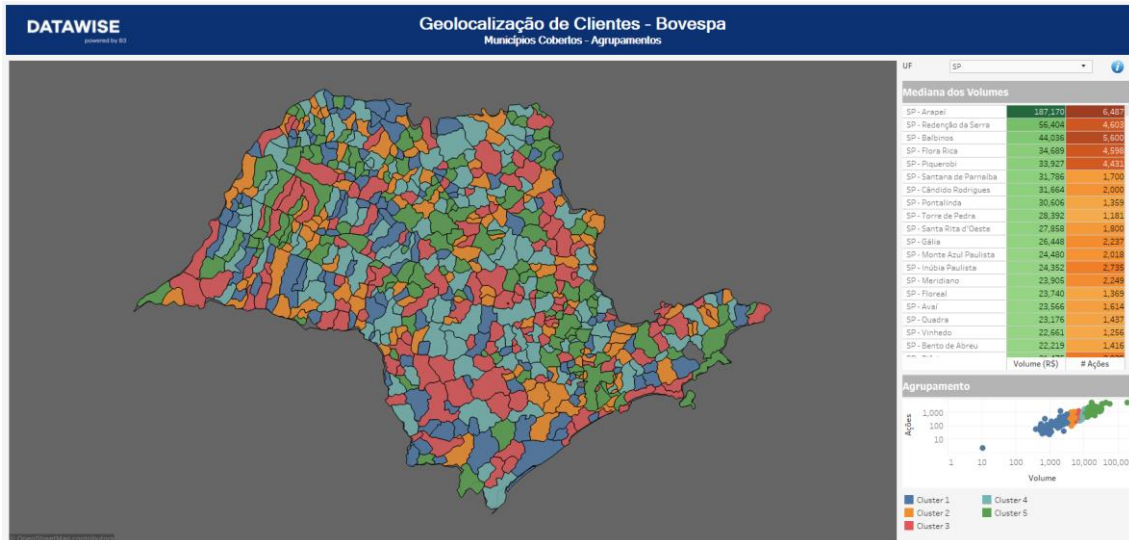
2 DASHBOARD DESCRIPTION

Geolocation allows you to assess the regions of Brazil, even at the municipal level, to understand the level of investment in the place, bringing financial volume and number of shares and contracts traded.

Data are also divided between States, in addition to municipalities. Next to the division, there are panels that generate groupings based on shares and financial volume invested (median in both cases).

The Geolocation dashboard features 5 interactive dashboards and views are divided into B3 markets (Listed, Futures & Derivatives and Asset Lending).

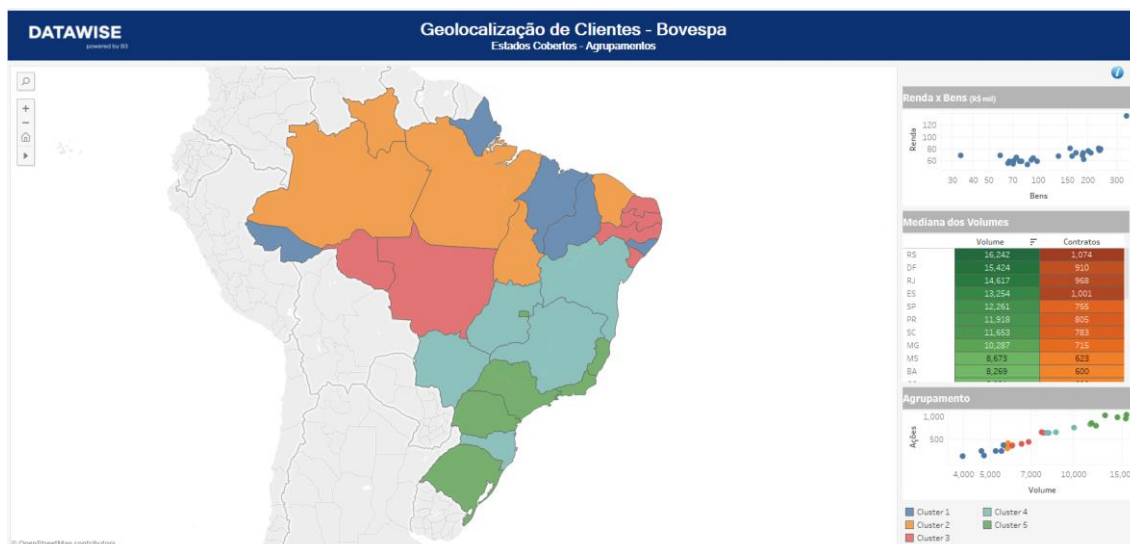
2.1 Clustered Covered Cities



In this panel you can select the region you would like to analyze about its median volumes and its grouping and if you want more specific data from those shown in this panel, just select the municipality and click "Get more details", this action will direct you to panel 4 in which will get the desired information.

Through the charts available on the panel, we can analyze interesting data, for example, in the grouping chart it is possible to identify municipalities that have similar characteristics of Financial Volume and Number of Shares traded and in the median volume table we can compare how the municipalities in the division are doing. between the volume median and the median of contracts traded (grouping criteria).

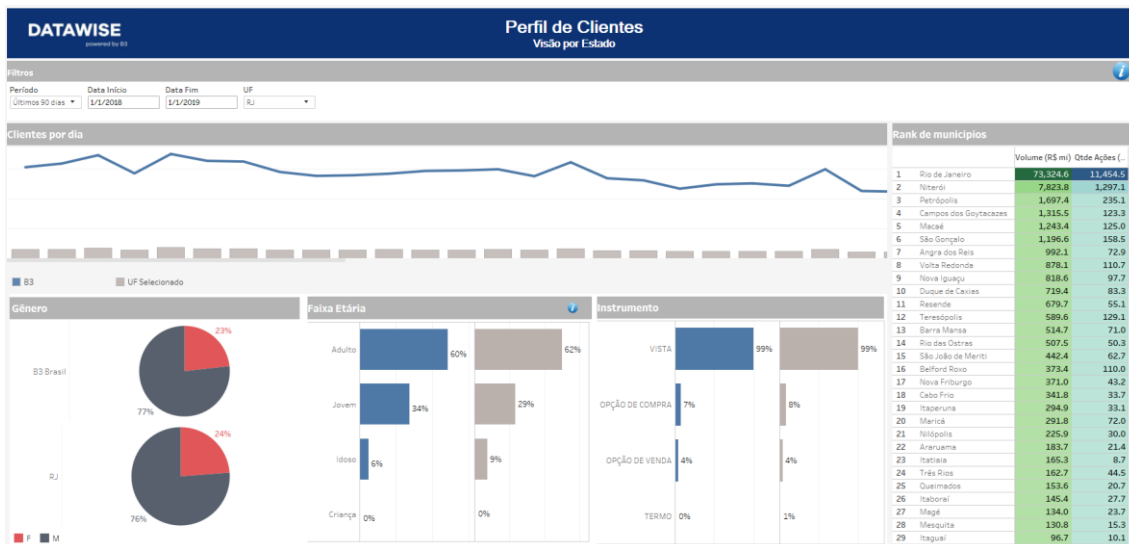
2.2 Clustered Covered States



In this panel, it is possible to select the Federative Unit that you would like to analyze on the median of volumes and the relation of grouping and income versus goods. If you want more specific data from those shown in this panel, just select the Federative Unit and click on “Get more details”, this action will direct you to panel 5 where you will obtain the desired information.

Through the charts available on the panel, we can analyze interesting data such as, for example, in the chart of Grouping and Income versus Assets, it is possible to identify Federative Units that have similar characteristics of Financial Volume and Number of Shares traded (Grouping) and Income and Assets (Income x Assets). In the Median of Volumes table, we can compare how the Federative Units are in the division between the median volume and the median of traded contracts (grouping criterion).

2.3 State Clients Profile

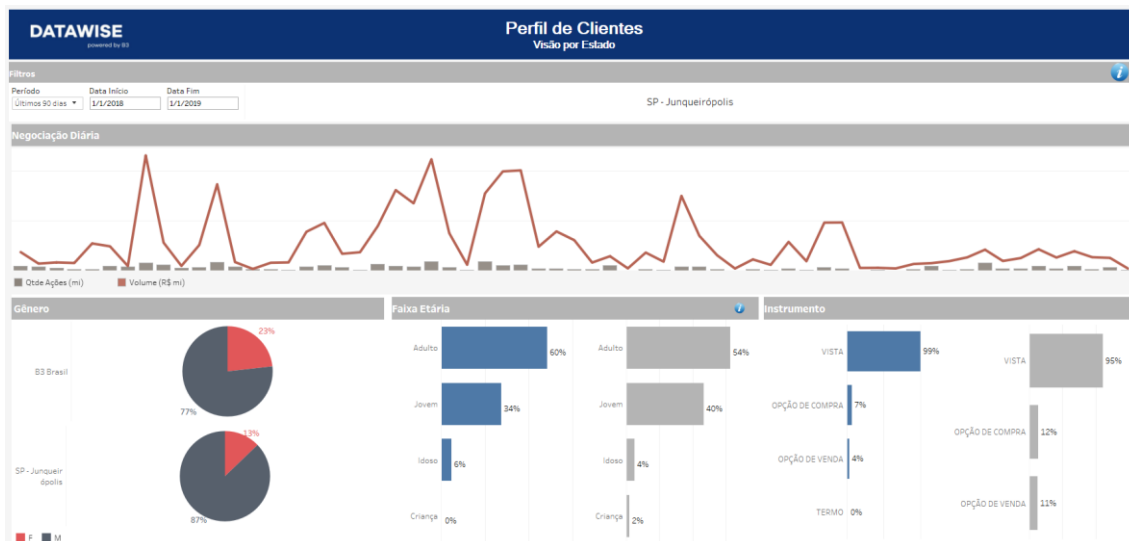


The interactive panel presents the investor profile of the municipalities in a certain state. Such profiles are presented against the profile of B3 investors (gray color) in gender, age group, traded instrument and the municipalities in that same state will be ranked by financial volume (R\$ thousand).

There is also the view that shows the number of investors who traded on B3 over time, where the time series has a day step and, when passing the cursor over the series, the day and the number of investors is displayed as we can see in the image below:



2.4 State Profile

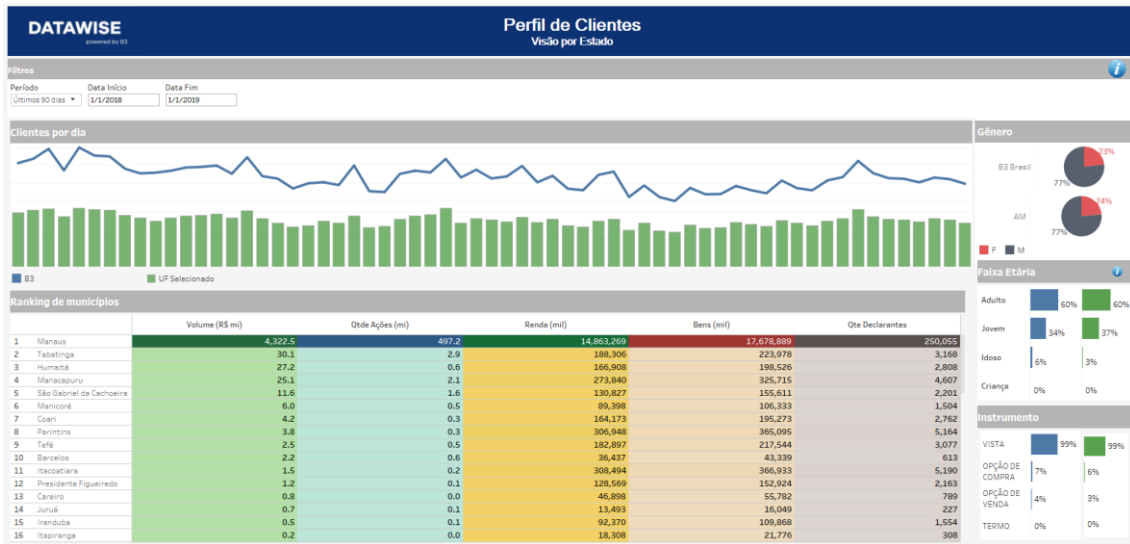


The dashboard displays the municipality's investor profile filtered in the Covered Municipalities panel (1). Such profiles are presented against the profile of investors in B3 (gray color) in gender, age group, traded instrument and municipalities in that same state will be ranked by volume.

There is also the view that shows the number of investors who traded on B3 over time, where the time series has a day step and, when passing the cursor over the series, the day and the number of investors is displayed as we can see in the image below:



2.5 Perfil por Estado



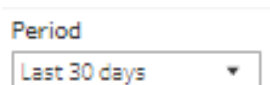
The dashboard displays the Federative Unit investor profile filtered in the Covered States panel (2). Such profiles are presented against the profile of investors in B3 (blue color) in gender, age group, instrument traded and the municipalities in that ranking of state will be ranked by financial volume, but it is possible to view in this same table the number of shares, income, goods and declarants.

There is also the view that shows the number of investors who traded on B3 over time, where the time series has a day step and, when passing the cursor over the series, the day and the number of investors are displayed as we can see in the image below:



3 FILTERS

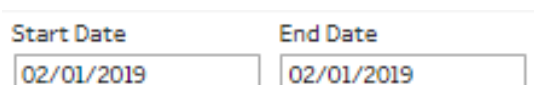
3.1 Period



Period
Last 30 days

Period – Choose a period between August 28, 2017 and the last date which will be between T-2 or T-3.

When choosing the **date selection** option in the period filter it allows users to choose start date and end date.



Start Date End Date
02/01/2019 02/01/2019

When choosing the **last 30 days** option it will display data from the last 30 calendar days.

3.2 Federative Unit



UF
(Tudo)

It is possible to select geographic regions at the state level such as SP, RJ BA, GO, MT, among others.

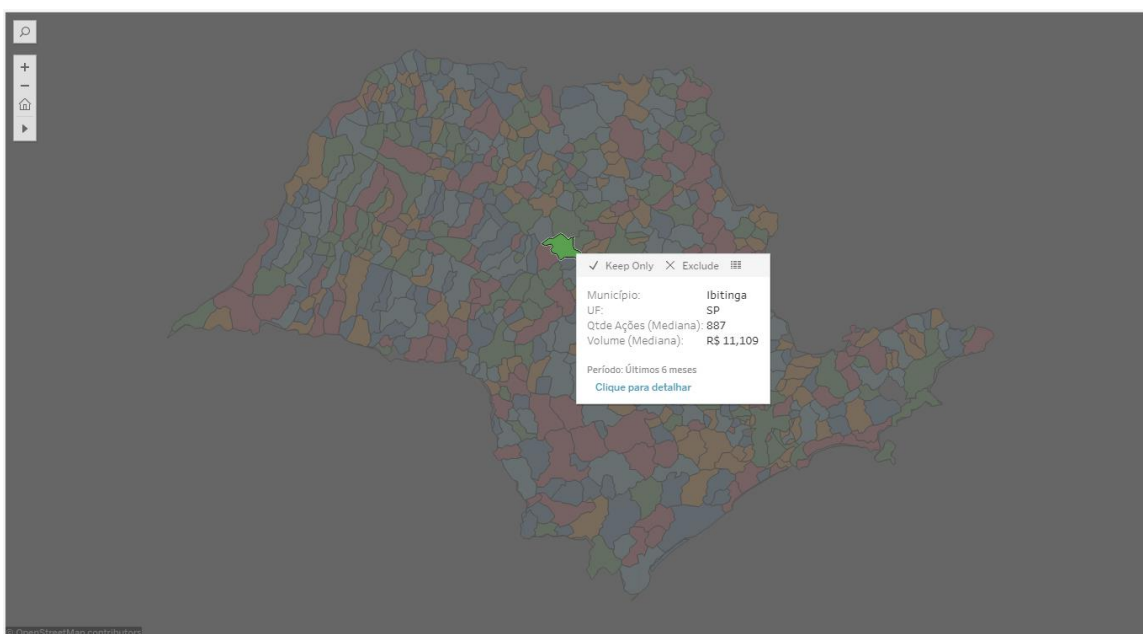
4 SPECIFIC FILTERS FOR EACH PANEL

In the Covered Municipalities and Covered States panels there are specific filters as we can see below:

4.1 Clustered Covered Cities

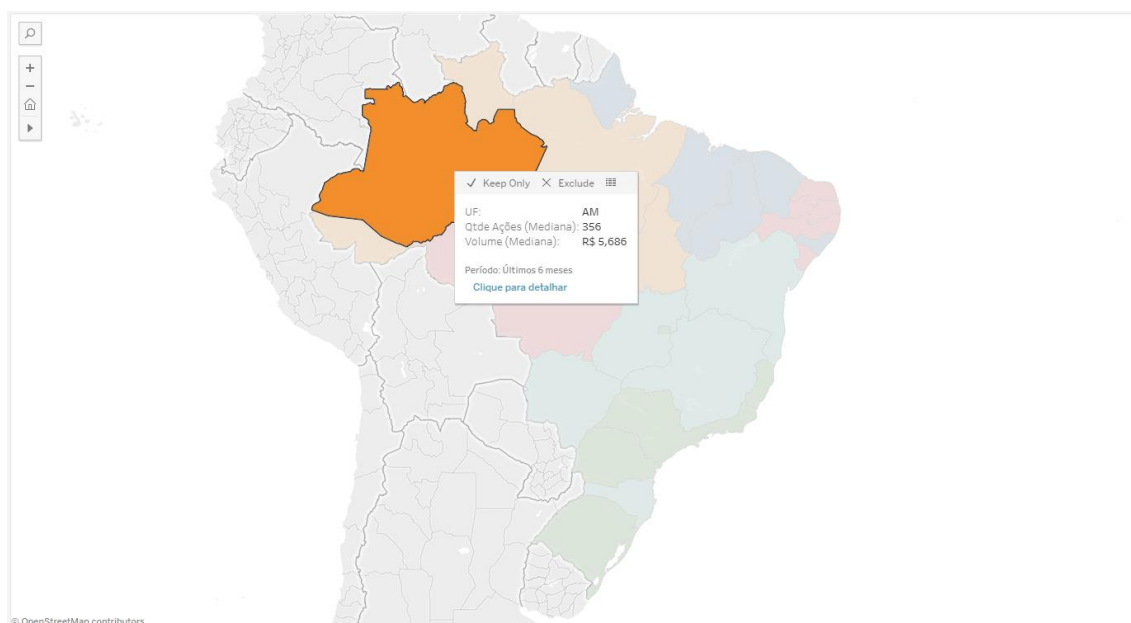
In addition to the Federative Unit selection filter, it is possible to filter the information by interacting with the panels and to select more than one piece of information, just press the CTRL key and, to undo it, click on the selected items.

It is worth noting that the main map of this panel has interactivity with the Customer Profile Panel by State (4), so the information on panel 4 will only change after clicking on the region you want to filter and selecting "Click to detail" as we can see below:



4.2 Clustered Covered States

The same mechanism of the panels above works for the Covered States Panel (2) and the Profile by States (5), in which the filtered information in the main panel can be opened with more details in panel 5 by selecting the option "Click to drill down".



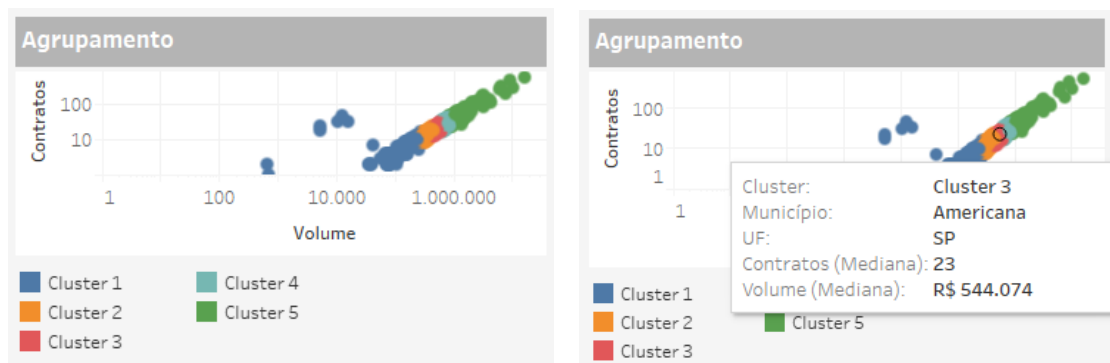
5 METRICS

5.1 Volume (Median) – Panel 1 and 2

Mediana dos Volumes		
SP - Arapeí	165,138	5,319
SP - Flora Rica	60,401	6,505
SP - Redenção da Serra	57,514	4,603
SP - Balbinos	44,036	5,600
SP - Piquerobi	34,199	2,872
SP - Santana de Parnaíba	29,945	1,600
SP - Pontalinda	28,605	1,252
SP - Torre de Pedra	28,392	1,181
SP - Santa Rita d'Oeste	27,858	1,800
SP - Gália	26,706	2,110
SP - Bento de Abreu	26,532	1,518
SP - Inúbia Paulista	24,352	2,885
SP - Meridiano	22,983	1,999
SP - Tabatinga	22,202	2,074
SP - Vinhedo	21,946	1,171
SP - Monte Azul Paulista	21,405	1,646
SP - Rifaina	21,180	4,046
SP - Marinópolis	20,822	1,676
SP - Pedrinhas Paulista	20,698	2,250
	Volume (R\$)	# Ações

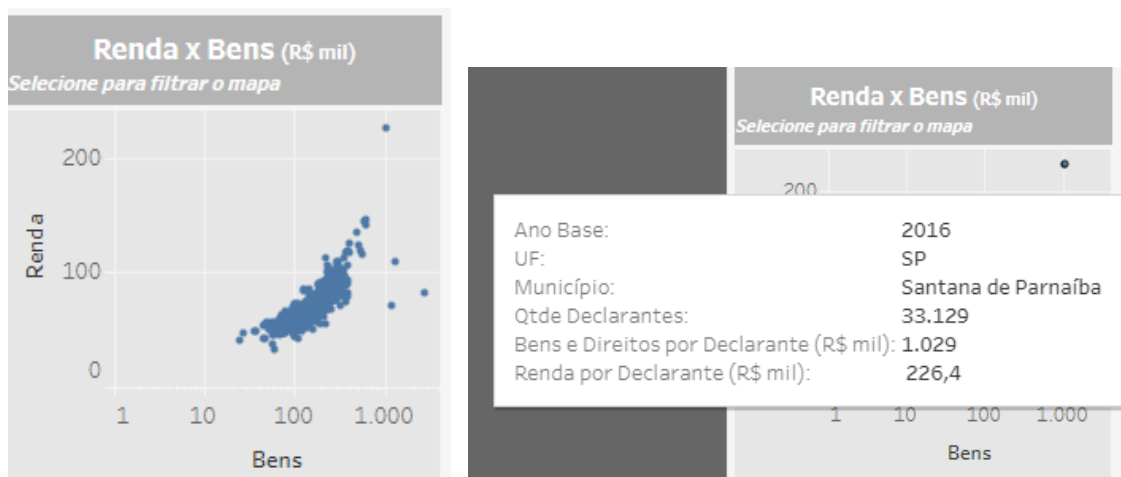
The column in green expresses the investment median, while the orange column expresses the median of invested shares and the grouping criterion is the division between the volume median and the median of traded contracts.

5.2 Clusters – Panel 1 and 2



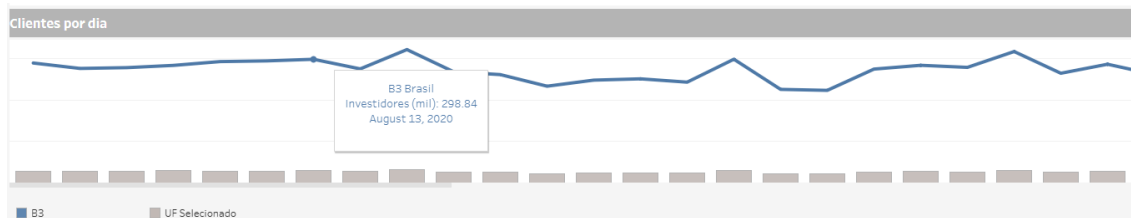
For the grouping graph, it is possible to identify municipalities that have similar characteristics of Financial Volume and Number of Shares traded. In this example, the American Municipality belongs to Cluster 3 with a median number of contracts traded of 23 and a Financial Volume of 544,074 thousand.

5.3 Income x Assets – Panel 2



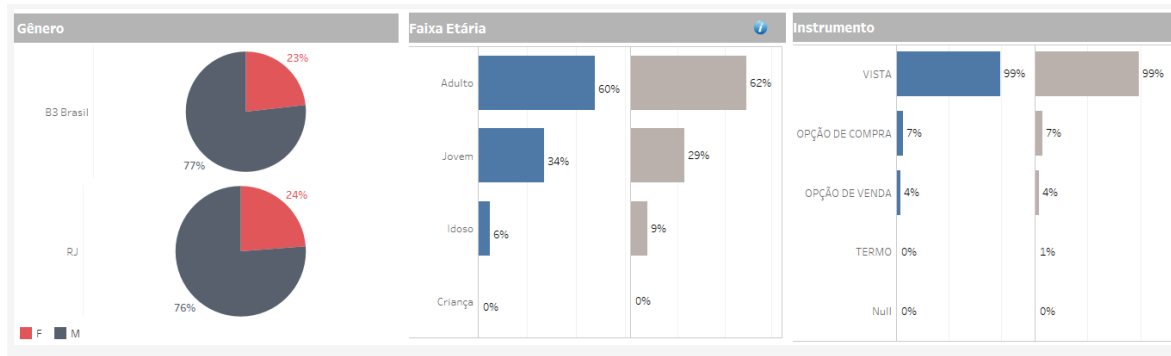
For this graph, it is possible to see the relationship between Assets and Income, in which the sum of the municipality's income is divided by the number of declarants.

5.4 Clients per Day– Panel 3 and 4



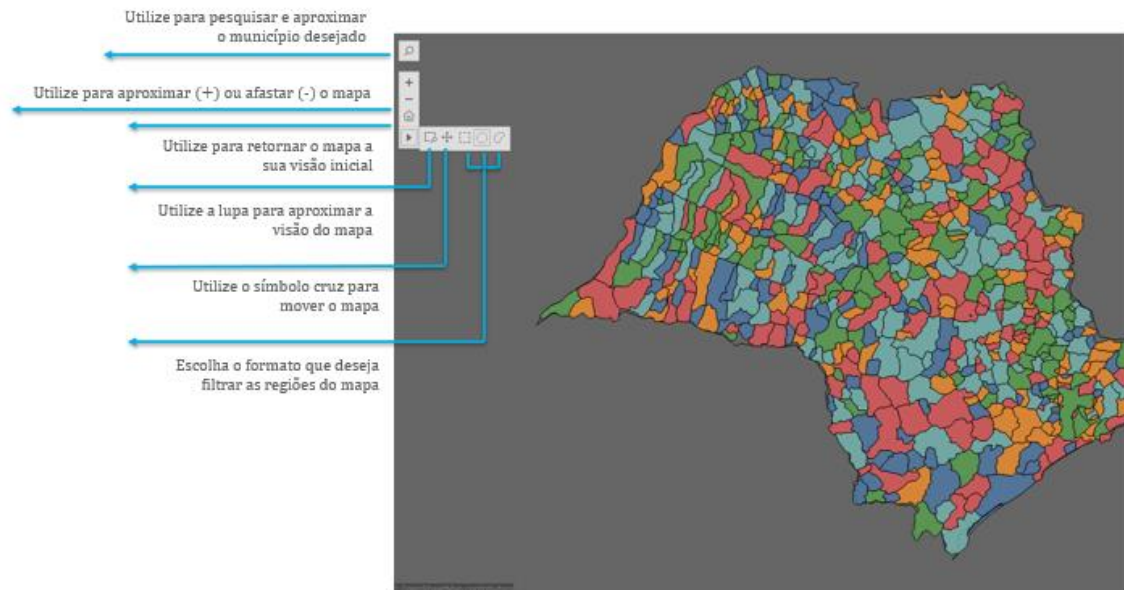
Comparison between clients in the selected State and the market (B3). The volume will appear in thousands, considering the arrival of investors on a daily basis.

There will also be an evaluation of data for Gender, Age and Instrument, comparing in all cases the selected municipality or state against the total volume of B3.

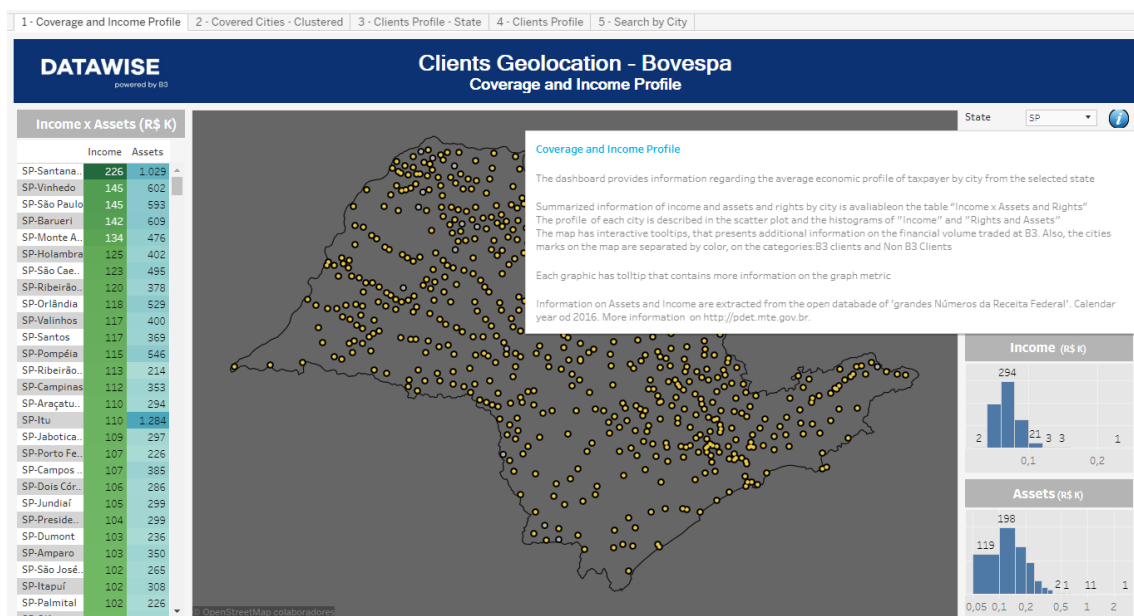


6 FINAL CONSIDERATIONS

Regarding the use of the map, each button has its functionality as shown in the image below:



Regarding the symbol on the dashboards, hovering over it will open a dialog box where there will be additional information about a certain spreadsheet, chart, among other information, as shown in the image below:



7 SERVICE TEAMS

Take a major step and optimize your decision making. Explore our products. If you have any query, talk to our team.

Any query? Talk to us

DATAWISE Sale: produtosdedados@b3.com.br

Contracting: contratacao@b3.com.br

Technical Support: dataservices@b3.com.br