



# TRADING RANKING

DATAWISE Dashboards

**TABLE OF CONTENTS**

<b>1</b>	<b>PRODUCT DESCRIPTION WITHIN THE DATAWISE SERVICE.....</b>	<b>4</b>
<b>2</b>	<b>DASHBOARD DESCRIPTION .....</b>	<b>4</b>
<b>2.1</b>	<b>Consolidated Panel .....</b>	<b>4</b>
<b>2.2</b>	<b>Comparative Panel.....</b>	<b>5</b>
<b>2.3</b>	<b>Comparative Panel Independent Filter .....</b>	<b>6</b>
<b>2.4</b>	<b>Time Series Panel .....</b>	<b>7</b>
<b>3</b>	<b>FILTERS .....</b>	<b>7</b>
<b>3.1</b>	<b>View .....</b>	<b>7</b>
<b>3.2</b>	<b>Metrics.....</b>	<b>7</b>
<b>3.3</b>	<b>Period .....</b>	<b>8</b>
<b>3.4</b>	<b>Instrument .....</b>	<b>8</b>
<b>3.5</b>	<b>Maturity .....</b>	<b>9</b>
<b>3.6</b>	<b>Tickers .....</b>	<b>9</b>
<b>3.7</b>	<b>Investor Category .....</b>	<b>9</b>
<b>3.8</b>	<b>Instrument .....</b>	<b>10</b>
<b>3.9</b>	<b>Trade Type .....</b>	<b>10</b>
<b>4</b>	<b>SPECIFIC FILTERS FOR EACH PANEL .....</b>	<b>11</b>
<b>4.1</b>	<b>Consolidated Panel .....</b>	<b>11</b>

<b>4.2 Comparative Panel.....</b>	<b>11</b>
<b>4.3 Time Series Panel .....</b>	<b>12</b>
<b>5 EXTRAS .....</b>	<b>12</b>
<b>5.1 Groupings .....</b>	<b>12</b>
<b>6 SERVICE TEAMS .....</b>	<b>13</b>

## **1 PRODUCT DESCRIPTION WITHIN THE DATAWISE SERVICE**

The DATAWISE product was created by B3 with the aim of helping its clients in strategic decisions consolidating various reliable and/or sensitive data in the form of interactive dashboards (DATAWISE Dashboard) and reports (DATAWISE Reports). It should be noted that as stated in the Commercial Policy, the DATAWISE service does not allow the distribution or redistribution of data.

Each of these modules can be contracted separately as well as their products (individual dashboards and reports), according to the client's intention. Through the interactive panels it's possible analyze the behavior of stocks (BOVESPA), derivatives and stock futures (BMF) and rental of stocks (BTB) with DATAWISE Dashboards. Already in DATAWISE Reports you can analyze trading and post-trade asset data, mainly from the OTC market thought reports with raw data (Data Report) or worked reports (Market Report).

In this manual we will show the Trading Ranking dashboard layout, data and filters contained in the DATAWISE Dashboard module.

## **2 DASHBOARD DESCRIPTION**

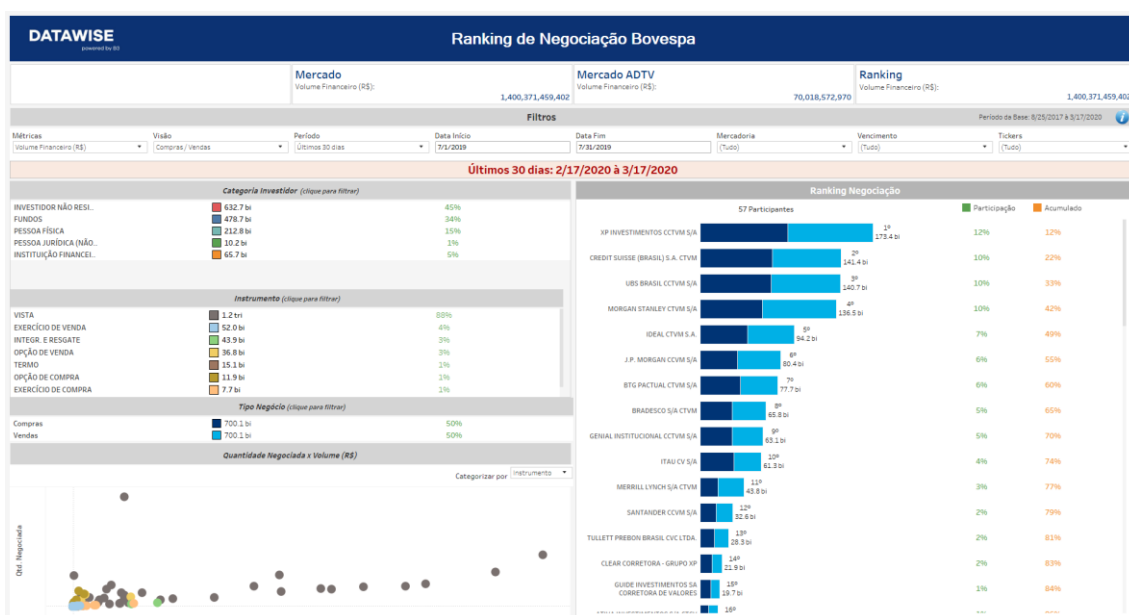
The Trading Ranking shows the entire financial volume trading directly in B3, not counting the allocation values for the Bovespa, BM&F and BTB segments. The dashboard is divided into four panels that allow you to monitor the presence of each brokerage house and their evolution from one period to another.

This dashboard allows the user, if he is trading participant, view and analyze which are the most relevant brokerage houses by instrument, ticker, asset and investor category.

### **2.1 Consolidated Panel**

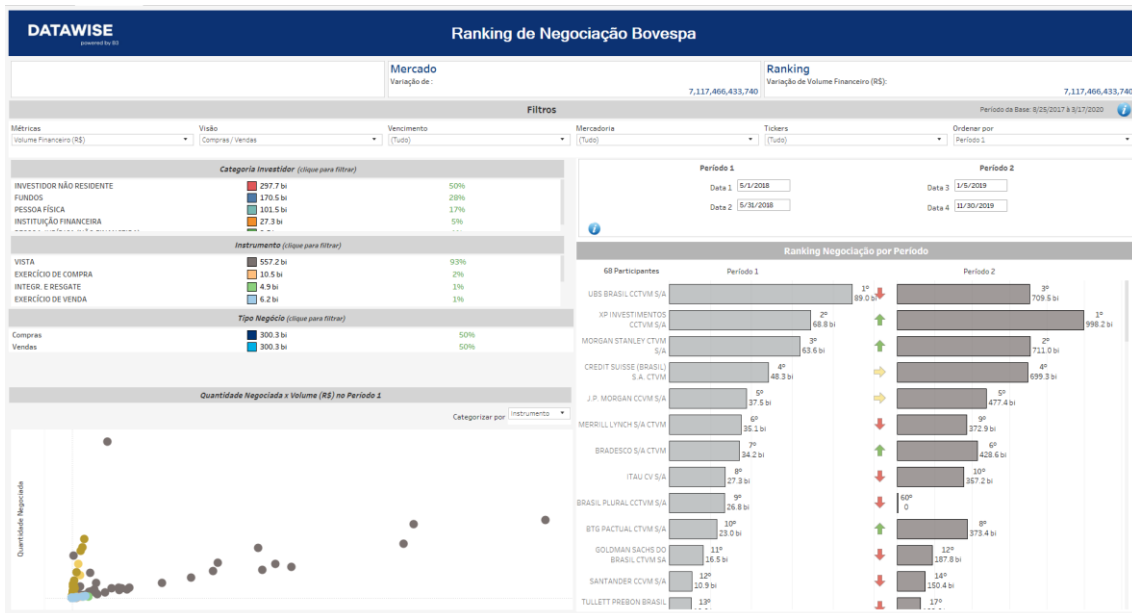
This panel brings:

- An overview of trading rankings by brokerage house and a granularity at investor type, financial instrument and trade type level.
- Brokerage house ranking by financial amount traded.
- Investor ranking based on investor category.



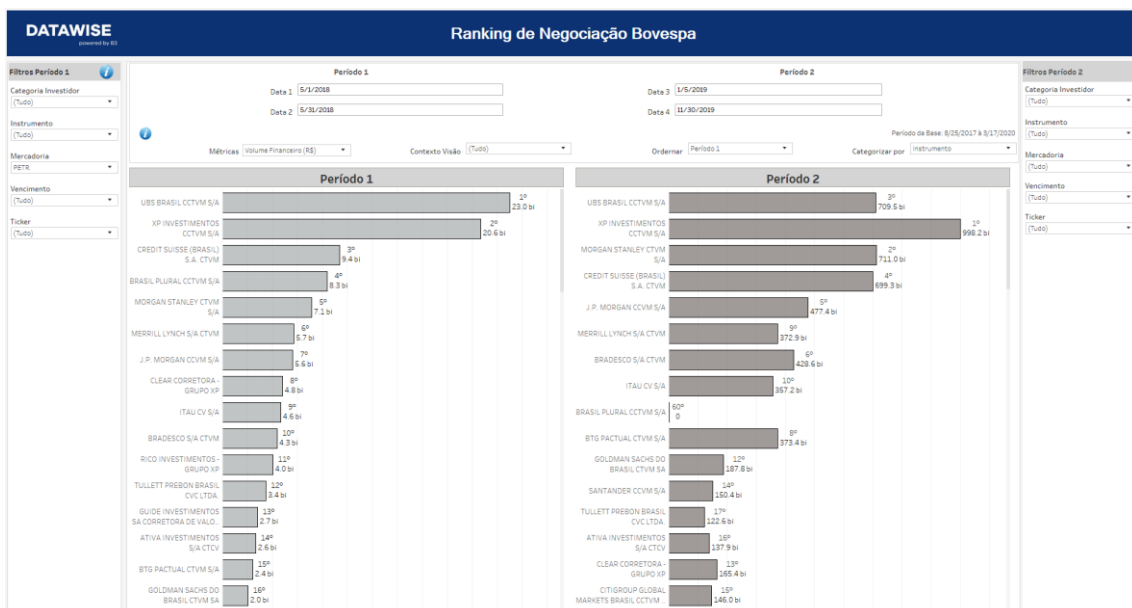
## 2.2 Comparative Panel

The comparison is based on participant performance in a two-period analysis, showing if a participant has increased, stabilized or decreased their position.



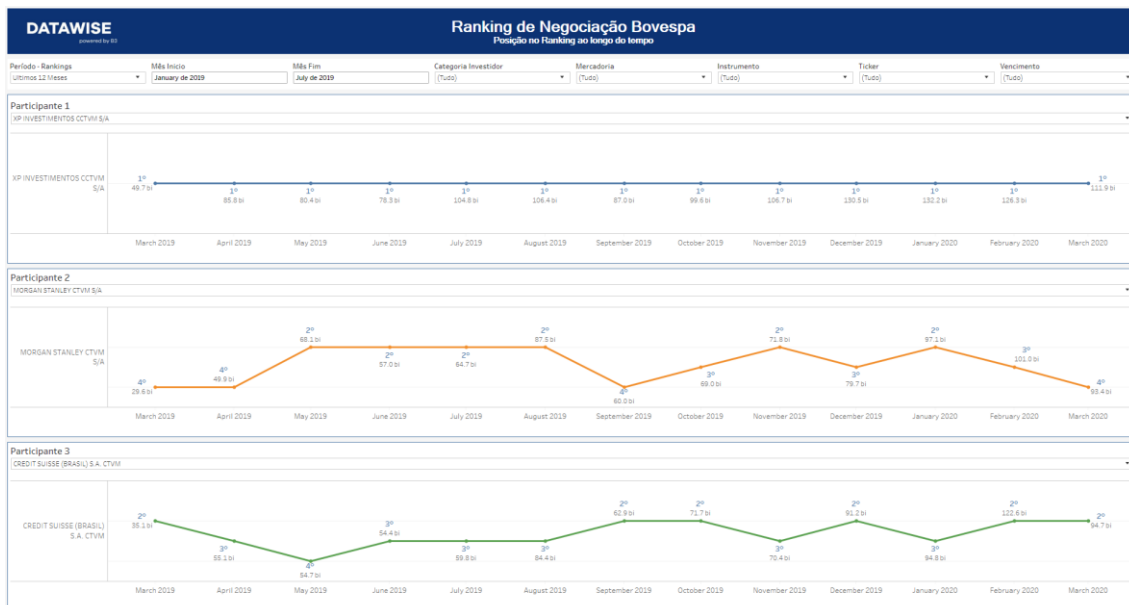
### 2.3 Comparative Panel Independent Filter

This comparison is done with a focus on collation of data filtered by period showing whether a participant increased, stabilized or decreased their position



### 2.4 Time Series Panel

This comparison is done based on up to three participants in a timeline, showing the position of each participant on the chart and the cash value traded.



## 3 FILTERS

### 3.1 View

Visão

Allows participants to choose among the following data views within the dashboard: Average Daily Traded Volume (ADTV); Amount of Daily Trades (ADT) and Average Daily Traded Quantity (ADTQ).

### 3.2 Metrics

Métricas

**Metrics** – Cash Volume and Stock Quantity are the metrics available for viewing the dashboard.

For Derivatives and Futures (former BM&F segment) use the number of contracts for a more assertive analysis.

### 3.3 Period

Período

**Period** – Choose a period between August 28, 2017 and the last date which will be between T-2 or T-3.

When choosing the **date selection** option in the period filter it allows users to choose start date and end date.

Data Início  Data Fim

When choosing the **last 30 days** option it will display data from the last 30 calendar days.

### 3.4 Instrument

Mercadoria

**Product** – Allows users to choose a specific product, usually the product is the first four letters that make up the instrument, including cash equities, options and forwards.



### 3.5 Maturity

Vencimento  
(Tudo) ▼

**Maturity** – Valid for call and put options and their respective exercises, it allows you to choose specific maturity dates. When choosing 9999-12-31 (default), these instruments are excluded from the analysis.

### 3.6 Tickers

Tickers  
(Tudo) ▼

**Ticker** – Allows you to choose the ticker of the stock to be analyzed. All assets traded on the analysis date will be available. You can choose to view either one market at a time or the entire market. To do this, simply remove the filter.

### 3.7 Investor Category

Categoria Investidor (clique para filtrar)		
INVESTIDOR NÃO RESI..	711.9 bi	47%
FUNDOS	520.5 bi	34%
PESSOA FÍSICA	216.5 bi	14%
PESSOA JURÍDICA (NÃO..	10.4 bi	1%
INSTITUIÇÃO FINANCEI..	69.9 bi	5%

**Investor Category** – Different investor types are in the same color as the other dashboards and have their percentages distributed according to the trading volume and chosen filters. It is possible to use the categories as a filter on only one click. By clicking and holding down the “Ctrl” key, you may select more than one audience type at the same time.

### 3.8 Instrument

<i>Instrumento (clique para filtrar)</i>		
VISTA	1.3 tri	88%
EXERCÍCIO DE VENDA	70.7 bi	5%
INTEGR. E RESGATE	51.0 bi	3%
OPÇÃO DE VENDA	43.7 bi	3%
TERMO	13.2 bi	1%
OPÇÃO DE COMPRA	10.3 bi	1%
RENDA FIXA	273.4 mi	0%
EXERCÍCIO DE COMPRA	177.5 mi	0%

**Instrument** – Different instrument types are available for filtering and may also be excluded if a previous filter has been selected, i.e., when selecting ticker PETR4, only the Visual Instrument will appear. If an instrument filter is chosen before the others, the products and tickers will be filtered in the same way as in the previous example. As with the Investor Category filter, by clicking and holding down the “Ctrl” key, you may select more than one instrument at the same time.

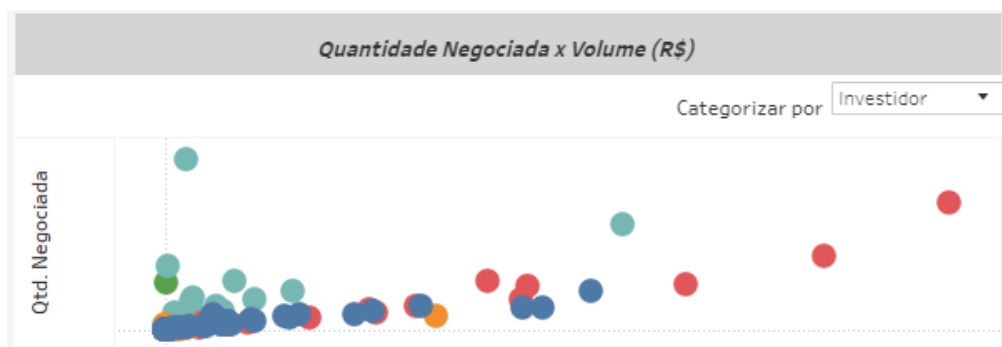
### 3.9 Trade Type

<i>Tipo Negócio (clique para filtrar)</i>		
Compras	764.7 bi	50%
Vendas	764.7 bi	50%

**Trade Type** – This filter is separated between buy and sell or with give-up and without give-up. In this filter, you can see which participants have the highest trading level of each trade type for certain filtered scenarios.

## 4 SPECIFIC FILTERS FOR EACH PANEL

### 4.1 Consolidated Panel



**Traded Quantity vs. Volume (R\$)** – When dragging the cursor you may select different participants for analysis and form a new ranking list.

### 4.2 Comparative Panel

Período 1		Período 2	
Data 1	<input type="text" value="5/1/2018"/>	Data 3	<input type="text" value="1/5/2019"/>
Data 2	<input type="text" value="5/31/2018"/>	Data 4	<input type="text" value="11/30/2019"/>

**Period 1 and 2** – In the period comparison, you may choose two period intervals within the available base (August 2017 to T-2). When choosing this, you may compare Week on Week (WoW), Month on Month (MoM) or Year on Year (YoY).

Ordenar por

**Sort by** - It will also be possible to sort between period 1 and 2 and check which institutions went up or down from one period to another.

### 4.3 Time Series Panel

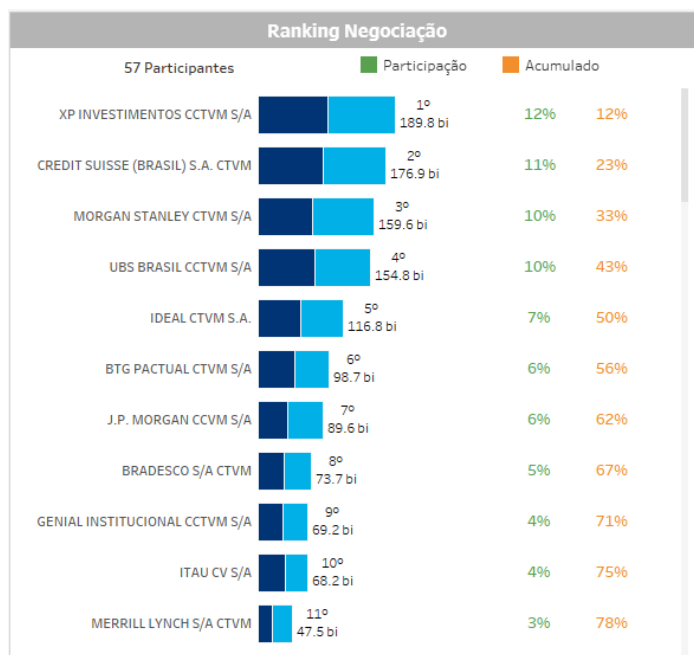
Participante 1  

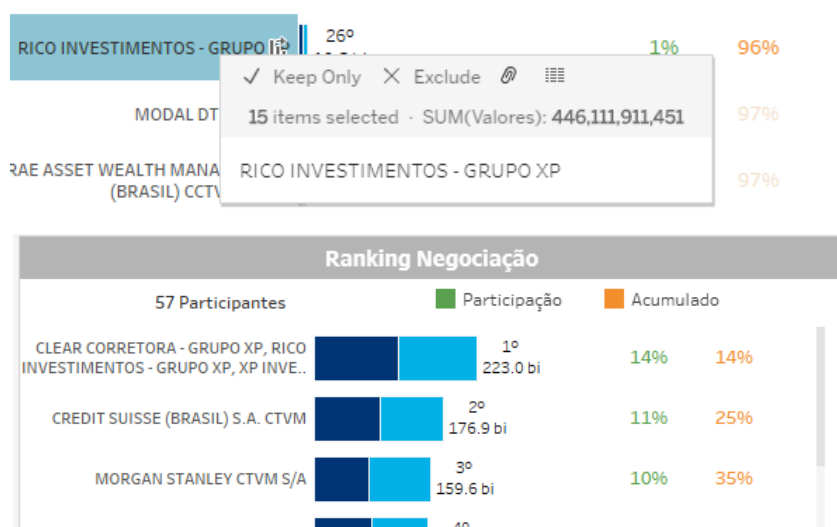
▼

**Participant 1, 2 and 3** – Choose the participants you wish to compare within the period. When clicking, you will have access to the institutions’ name and you will be able to assess up to 3 participants at the same time.

## 5 EXTRAS

### 5.1 Groupings





**Groupings** – In the existing trading dashboard where participants are listed, you can group some institutions together based on the Economic Group (i.e., XP Inc, which is made up of the XP, Rico and Clear brokerage houses). To carry out the grouping, click and select the desired squares by holding down the “Ctrl” key all the time. After choosing, move the mouse to display a menu with the following options: *Keep Only*, *Exclude* and *Group Member*. When clicking on *Group Member*, the new grouping appears in the ranking with the name of all the brokerage houses that compose it. Values will continue to be specified by the selected filters.

## 6 SERVICE TEAMS

Take a major step and optimize your decision making. Explore our products. If you have any query, talk to our team.

**Any query? Talk to us**

DATAWISE Sale: [produtosdedados@b3.com.br](mailto:produtosdedados@b3.com.br)

Contracting: [contratacao@b3.com.br](mailto:contratacao@b3.com.br)

Technical Support: [dataservices@b3.com.br](mailto:dataservices@b3.com.br)